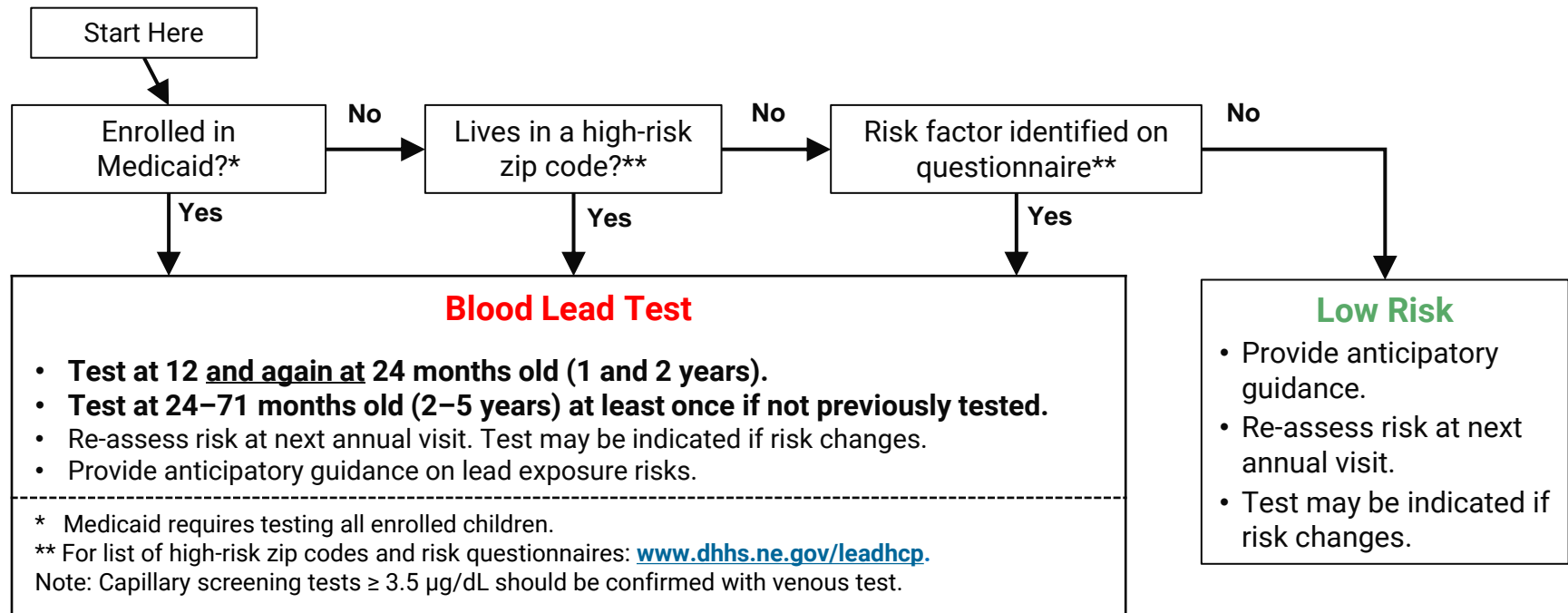


Nebraska Blood Lead Testing Clinical Algorithm

Children < 6 years old



Other Patients to Consider Blood Lead Testing

- Newly-arrived refugees and immigrants.
- Patient with history of ingesting non-food items or pica.
- Child with neurodevelopmental disabilities such as autism, ADHD, or learning delays.
- Pregnant women with one or more lead exposure risk factors identified on questionnaire.**
- Adults with lead exposure from occupation or hobby.
- Parent or patient requests blood lead test.

Additional Information

- For additional guidance on blood lead testing and management: www.dhhs.ne.gov/leadhcp
- Questions? Childhood Lead Poisoning Prevention Program: dhhs.epi@nebraska.gov or 402-471-2937.
- For case referrals and local guidance, contact local health department www.dhhs.ne.gov/lhd
- Local health departments may recommend blood lead testing for additional populations.