

Department of
Health and Human Services
Kerry Winterer, CEO

Board of Health

Division of Public Health
Joann Schaefer, M.D.
Chief Medical Officer

Health Licensure & Investigations Section
Joseph Acierno, M.D., J.D.
Deputy Chief Medical Officer

Community Health Section
Jacquelyn Miller, D.D.S.
Chief Administrator

Environmental Health Unit
Sue Semerena

Licensure Unit
Helen Meeks



Investigations Unit
Robert Semerena

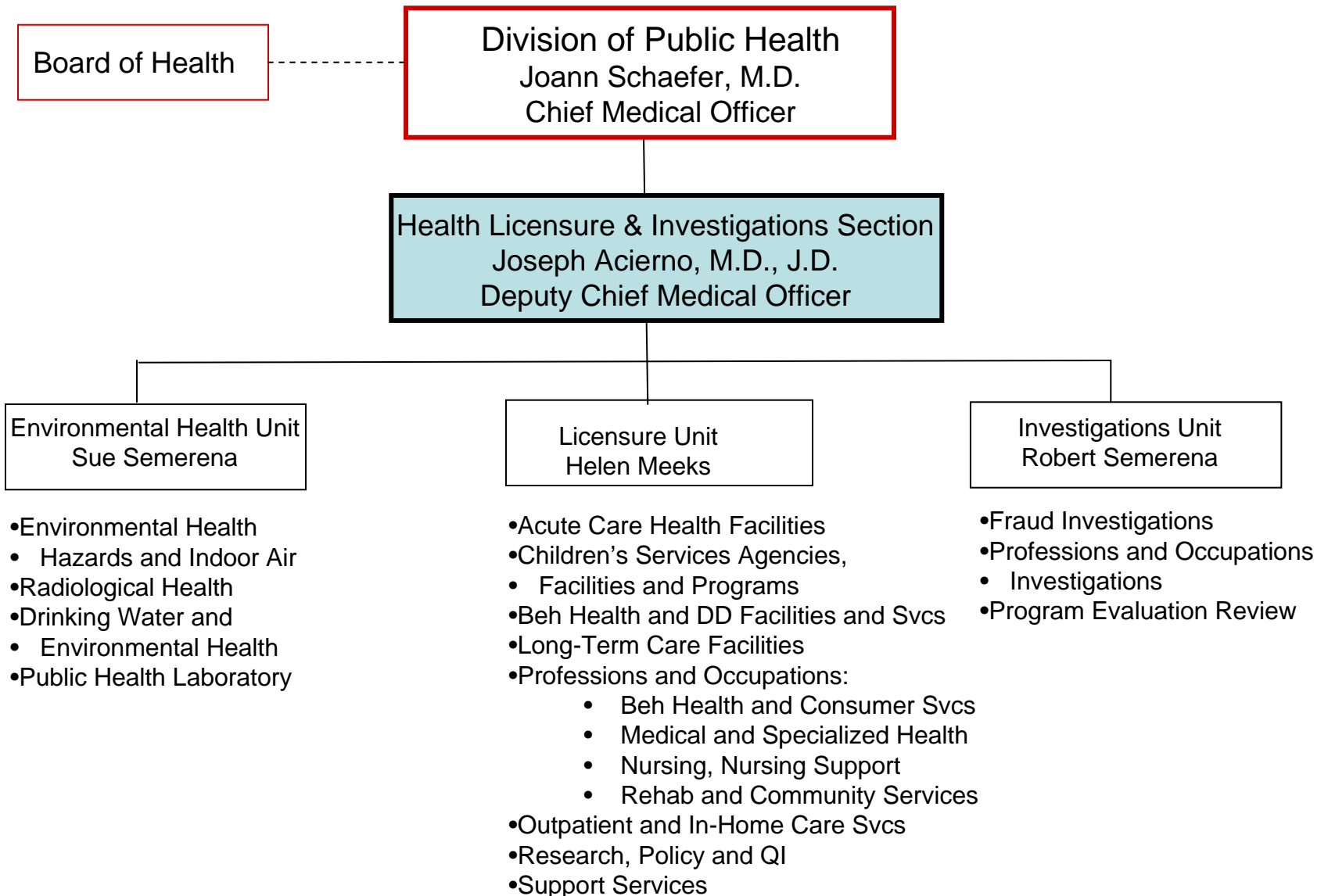
Community Health
Planning and
Protection Unit
Sue Medinger

Health Promotion Unit
Dan Cillessen

Lifespan Health
Services Unit
Paula Eureka

Public Health Support Unit
Ming Qu

-  Gubernatorial Appointees
-  Director Appointees



Gubernatorial Appointees
 Director Appointees

Division of Public Health
Joann Schaefer, M.D.
Chief Medical Officer

Health Licensure & Investigations Section
Joseph Acierno, M.D., J.D.

Environmental Health Unit
Sue Semerena

Office of
Environmental Health
Hazards & Indoor Air
Doug Gillespie

- Asbestos & Lead-based Paint
- Childhood Lead Poisoning Prevention
- Lead Hazard Control
- Radon & Indoor Air

Office of
Radiological Health
Julia Schmitt

- Xray
- Radioactive Materials
- Emergency Response
- Material Security

Office of
Drinking Water &
Environmental Health
Jack Daniel

- Environmental Sanitation
- Well Drillers
- Field Services
- Monitoring & Compliance
- Engineering

Office of Public
Health Laboratory
Services
Sandy Irons

Health Licensure & Investigations Section
Joseph Acierno, M.D., J.D.

Licensure Unit
Helen Meeks

Acute
Care
Health
Facilities

Joann
Erickson

Behavioral
Health &
Consumer
Services
Professions &
Occupations

Kris Chiles

Behavioral
Health
& DD
Facilities
& Services

Sheryl
Mitchell

Children's
Services
Agencies,
Facilities &
Programs

Pat
Urzedowski

Long-
Term
Care
Facilities

Eve Lewis

Medical &
Specialized
Health
Professions &
Occupations

Becky
Wisell

Nursing &
Nursing
Support
Professions &
Occupations

Diana Baker

Outpatient
& In-Home
Care
Services

Pamela
Kerns

Rehab &
Community
Services
Professions &
Occupations

Diane
Hansmeyer

Research,
Policy
and QI

Dave
Montgomery

Support
Services

Claire
Titus

Health Licensure & Investigations Section
Joseph Acierno, M.D., J.D.

Investigations Unit
Robert Semerena

Fraud
Investigations

Jana McDonough

Professions &
Occupations
Investigations

Michael Grutsch

Program
Evaluation Review

Joann Ragan

Board of Health

Division of Public Health
Joann Schaefer, M.D.
Chief Medical Officer

Community Health Section
Jacquelyn Miller, D.D.S.
Chief Administrator

Community Health
Planning and
Protection Unit
Sue Medinger

- Community Health Development
- DD Planning Council
- EMS/Trauma System
- HAN and E-Health
- Minority Health & Health Equity
- Public Health Emergency Response
- Rural Health

Health Promotion Unit
Dan Cillessen



- Chronic Disease Prevention
- Comprehensive Cancer
- Infectious Disease Prevention
- Tobacco Use Prevention
- Injury Prevention
- Oral Health & Dentistry

Lifespan Health
Services Unit
Paula Eurek

- Perinatal, Child & Adolescent Health
- Reproductive Health
- Women's & Men's Health
- Commodity Supplemental Food Program
- Immunizations
- MCH Epidemiology
- Newborn Screening
- Special Suppl. Nutrition Program for Women, Infants & Children (WIC)

Public Health
Support Unit
Ming Qu

- Epidemiology
- CODES
- Geographic Information System
- Health Statistics
- Vital Records

 Gubernatorial Appointees
 Director Appointees

Division of Public Health
Joann Schaefer, M.D.
Chief Medical Officer

Community Health Section
Jacquelyn Miller, D.D.S.

Health Promotion Unit
Dan Cillessen

Chronic Disease
Prevention

Comprehensive
Cancer
June Ryan

Infectious Disease
Prevention
Sandy Klocke

Tobacco Use
Prevention
Judy Martin

Injury
Prevention
Peg
Prusa-Ogea

Oral Health
& Dentistry
Karen
Sorenson, DDS

- Arthritis
- Diabetes Prevention & Control
- Heart Disease & Stroke Prevention
- Organ & Tissue Donor
- Preventive Health & Health Services Block Grant
- Renal Program
- Wellness Activities

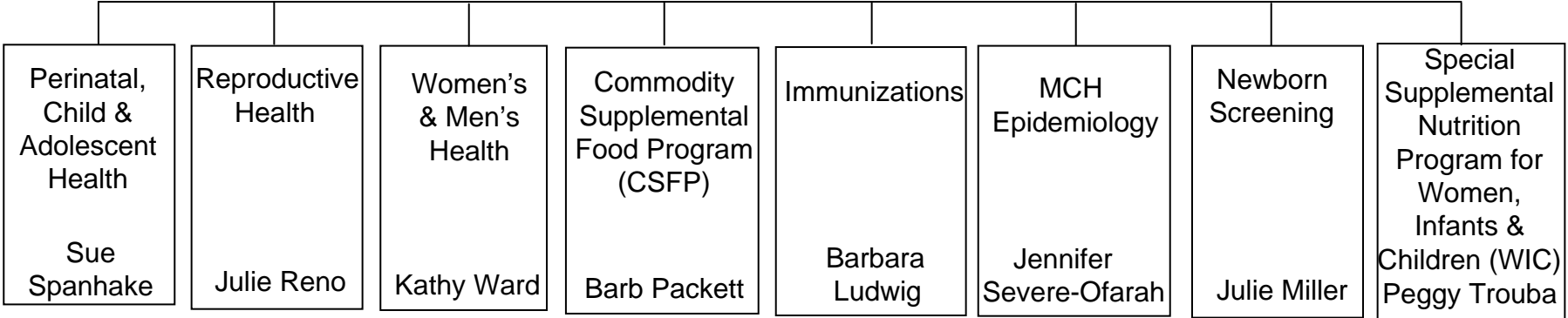
- Hepatitis
- HOPWA
- HIV Counseling, Testing & Surveillance
- Ryan White
- STD Prevention & Control
- TB

Community Health Section
Jacquelyn Miller, D.D.S.

Lifespan Health Services Unit
Paula Eurek

Planning & Support
Rayma Delaney

- Title V/MCH Block Grant Administration
- General planning & coordination of grant management



- Abstinence Education
- Adolescent Health
- Healthy Mothers/Healthy Babies Helpline
- Perinatal Depression
- Safe Sleep/SIDS
- School Health
- Services for Women Who are or Believe They are Pregnant
- Tobacco Cessation (prenatal / preconception)
- Together for Kids & Families

- Title X Family Planning

- Colorectal Cancer
- Every Woman Matters *
- Healthy Weights
- Men's Health Special Initiatives
- The Heart Truth
- WISEWOMAN
- Women's Health Special Initiatives
- Women's Health Advisory Council

- Supplemental Foods for Seniors, Infants, Children & Women

- Childhood, Adolescent, & Adult Immunizations
- Hepatitis B
- International Vaccines
- Registry/Information Systems
- School & Childcare Immunization Requirements
- VFC

- Child Death Review
- PRAMS
- SSDI
- Linked to Public Health Support Epidemiology

- Early Hearing Detection & Intervention
- Metabolic & Inherited Diseases

- Breastfeeding Peer Counseling Services
- Nutrition Services for Women, Infants & Children

Preconception Health **

Elder Health**

* Includes State Funds for Cervical Cancer Screening & Diagnosis

** Examples of cross-cutting teams

Community Health Section
Jacquelyn Miller, D.D.S.

**Community Health Planning
& Protection Unit**
Sue Medinger

Community Health Development
Dave Palm

Developmental Disabilities Planning Council
Mary Gordon

EMS / Trauma System
Dean Cole

HAN and E-Health
Vacant

Minority Health and Health Equity
Ra Drake

Public Health Emergency Response
Chris Newlon

Rural Health
Dennis Berens

- Gov's Safe & Drug Free Schools
- Substance Abuse Prevention
- Uninsured / Underinsured Strategies

- Critical Incident Stress Mgmt
- EMS for Children
- Education & training
- Trauma Manager

- Electronic Health Needs Coordination
- Health Alert

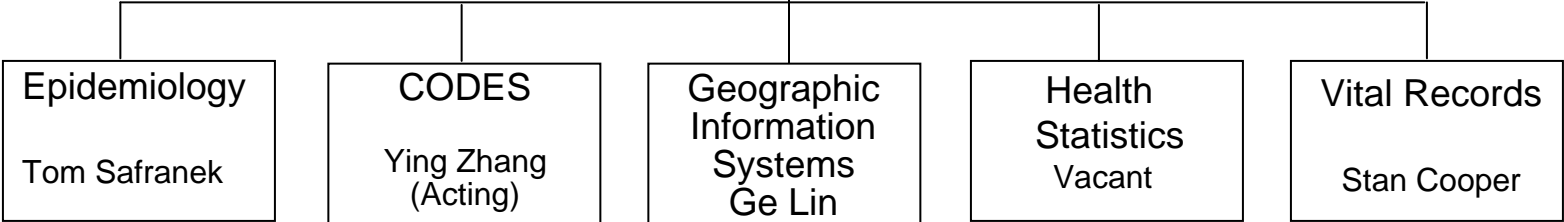
- Cong Dist 1,2,3
- Federal Partnership
- Minority Health Initiatives
- Native American Public Health Act

- Bioterrorism Preparedness
- Pan Flu
- Strategic National Stockpile

- Critical Access Hospitals
- Flex Program
- Incentive Programs
- Primary Care Office
- SHIP
- Shortage Area Designations

Community Health Section
Jacquelyn Miller, D.D.S.

Public Health Support Unit
Ming Qu



- Electronic Lab Surveillance
- Vector Surveillance
- Rabies Surveillance
- Public Health Veterinarian
 - * Chronic Disease
 - * Infectious Disease*
 - * Environmental
 - * Preparedness
 - * Substance Abuse
 - * Injury Prevention
 - * Maternal/Child Health EPI

- Behavioral Risk Factor Survey
- Birth Defects
- Cancer Registry
- ENARSIS
- Health Data
- Hospital D/C Data
- Parkinson's Registry
- Trauma Registry

- Adoptions
- Amendments
- Biological Fathers
- Birth
- Death
- Marriage
- Missing

* Team links